

PANEL FOR ASSISTED SHOWERING AND SYSTEM FOR
CLEANING AND DISINFECTION OF EQUIPMENT

Shower & Disinfection Panel



The Shower and Disinfection Panel provides a controlled delivery system for assisted showering, as well as for the cleaning and disinfection of shower equipment.

Assisted showering with secure warm water supply

The wall mounted shower panel is a part of the shower system when used with shower chairs or trolleys. It features a thermostatic mixer with an anti-scalding protection. During showering the water can be closely managed, delivering a gentle water stream at an optimum temperature.

Supports infection prevention

An integrated disinfection system automatically dilutes the concentrated disinfectant for an easy and secure cleaning and disinfection process.

Key features

Shower and Disinfectant panel can be fitted without flush, with flush valve and with flush tank

DISINFECTANT

A specially formulated Arjo disinfectant is optimized to use with the Shower & Disinfectant Panel.

DISINFECTION UNIT

The disinfection unit has an adjustable disinfectant mixer valve. Disinfectant storage is key-locked.

DISINFECTANT HANDLE

Good equipment disinfection routines are supported by the easy-to-use disinfection handle.



SHOWER HANDLE

Ergonomically designed for comfortable working routines, the shower handle is also equipped with a locking device.

FLUSHABLE SINK

Available in fiberglass or stainless steel, the sink provides a hygienic disposal solution for shower water & body waste.

SINK PLACEMENT

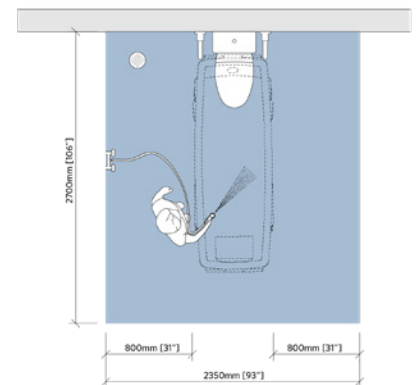
The panel's sink can be wall or floor-mounted. The drain outlet can also be connected to the wall or floor.

FLUSH VALVE

(OPTIONAL not in picture)
The flush valve enables flushing of the sink

PRODUCT INFORMATION

Weight	14 kg (31 lbs) without flush 14 kg (31 lbs) with flush valve 22 kg (49 lbs) with flush tank
Width	455 mm (17 7/8 inches) without flush 750 mm (29 1/2 inches) with flush tank 455 mm (17 7/8 inches) without flush
Height	510 mm (20 in)
Depth	190 mm (7 1/2 in)
Cold water	diameter 3/4 in male (customer connection)
Warm water	diameter 3/4 in male (customer connection)
Connect with shut-off valve	3/4 in connection
Max static pressure	6 bar (87 Psi)
Min operating pressure	2 bar (29 Psi) with disinfection 0.8 bar (12 Psi) without disinfection 2 bar (29 Psi) with flush valve
Min flow	20 l/min (5.3 gal/min)
Recommended cold water temperature	2-20 C (36-68 F)
Recommended hot water temperature	60-80 C (140-176 F)
Min drainage capacity – Shower & Disinfection Panel	25 l/min (6.6 gal/min)
Min drainage capacity – Flush sinks	100 l/min (26.4 gal/min)



SPACE REQUIREMENTS

Blue area shows the minimum working area required for the staff to be able to use the mechanical aids in an ergonomic way from one side.

For more info on installation requirements visit Architect portal at www.arjo.com